

# RFID Hands On Workshop

Welcome to the RFID Hands On Workshop presented by WINMEC. The workshop will be on the UCLA Campus.

Registration is in Rice Conference Room  
Directions to UCLA is on this page.  
Directions to Rice Conf. Room is on Pg.2

## Directions

The closest major airport to UCLA is the Los Angeles International Airport, LAX. From LAX, take the 405 Freeway north to the Wilshire Blvd. East exit. Continue east on Wilshire for several blocks, moving from the far right lane to the left. Make a left turn on Westwood Blvd. Follow Westwood Blvd. into campus.

UCLA's main campus is bounded by Sunset Blvd. on the north and Le Conte Ave. on the south; the east border is Hilgard Ave. and the west border is Gayley Ave. A number of UCLA units are located just south of campus, between Wilshire Blvd. and Le Conte Ave. Among these are the UCLA Hammer Museum, the UCLA Extension Centers, and the Geffen Theater.

### Directions

1. Take 405 (San Diego Freeway) to Wilshire Blvd. East
2. Travel east three blocks to Westwood Blvd.
3. Turn Left on Westwood Blvd.
4. Travel five blocks to Parking & Information Booth.
5. Stop at Parking & Information Booth and purchase parking (\$7). The Parking Attendant will direct you to available parking.



### engineering IV

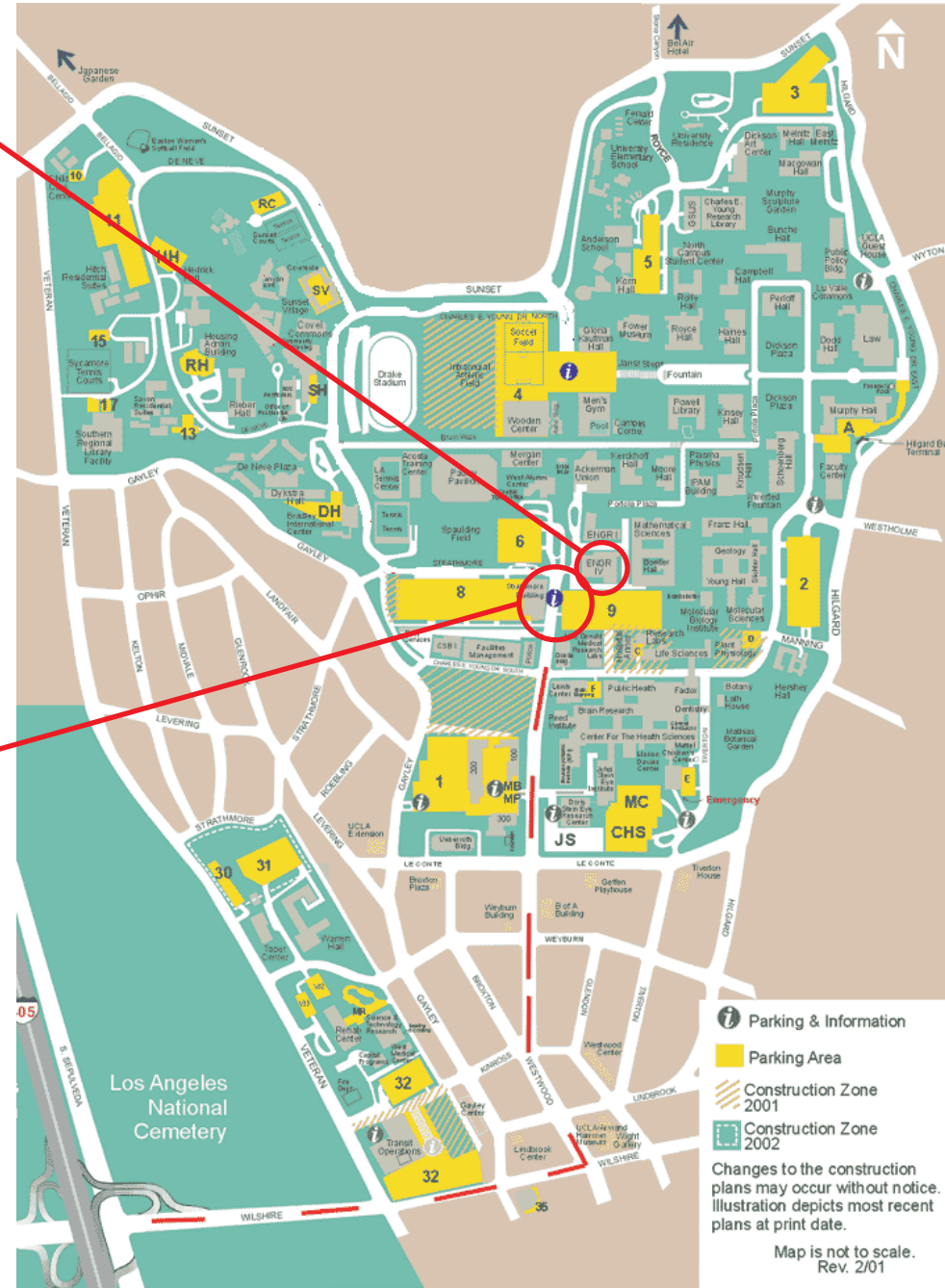
The wireless media lab is located in the 4th floor of Engineering IV. Engineering IV is connected to boelter hall, which houses the Rice Conference Room



### parking kiosk

The parking kiosk will have parking permits available for (\$7). They will direct you to available parking.

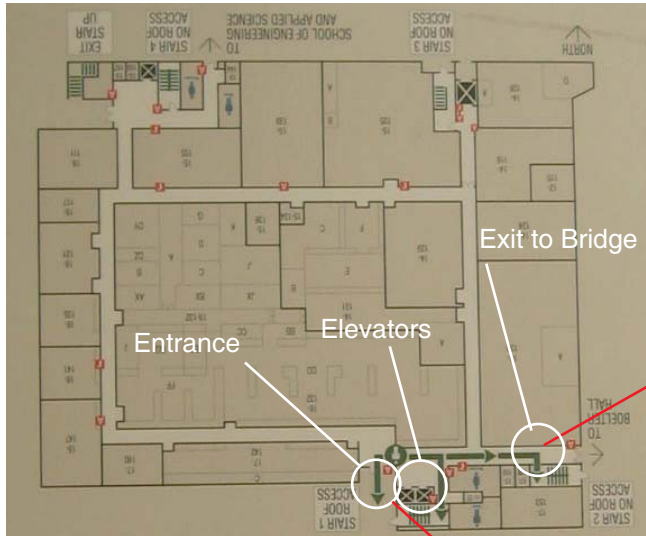
# where to park in ucla



# How to get from the parking lot to Rice Conference Room

Boelter Hall  
6764

## 2 Layout of Engineering IV floor plan



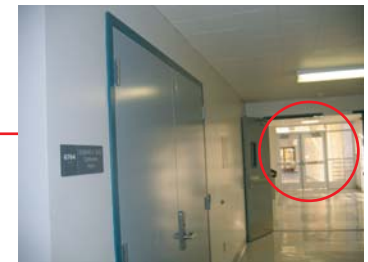
End of the east hallway of 5th floor to bridge.



Bridge between Eng. IV and Boelter Hall



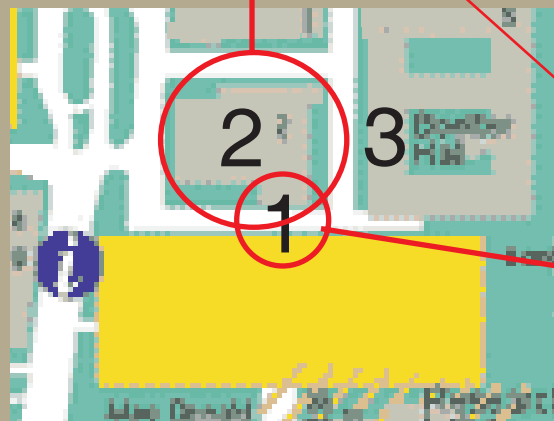
## 3 Rice Entrance in Boelter Hall 6764



After making a right from the elevators

arrive at boelter

take the bridge across



**1** There is a front entrance to Engineering IV, do not use it. You should go into an alleyway on the right side of the building (or the southside) that looks like (A) It is the alleyway sandwiched by Engineering IV and a Parking structure.

Look for the entrance that looks (B). This is the south entrance to Engineering IV. You are now in Engineering IV or on the map building 2.

**2** In Engineering IV, once entering the building find the elevators to the right. Take them up to the **5th floor**. From the 5th floor make a right down the hallway and you should see a bridge. Exit the bridge and head to Boelter hall (3)

**3** Once you enter the glass doors of boelter hall, Rice Conference room will be on your right, the number of the room being, 6764 Edward K. Rice Conference Room